

250 WEDGE ROAD STAGE 3 YOURLAND DEVELOPMENTS PTY LTD

GENERAL NOTES:

SURVEY

1. ALL LEVELS ARE TO AUSTRALIAN HEIGHT DATUM AND ALL COORDINATES ARE TO MAP GRID OF AUSTRALIA (MGA) 94, ZONE 55.

2. ALL EXISTING SURFACE LEVELS SHOWN ON THE ENGINEERING DRAWINGS HAVE BEEN INTERPOLATED FROM A DIGITAL TERRAIN MODEL. THESE LEVELS HAVE BEEN USED AS THE BASIS FOR ALL ENGINEERING DESIGN AND DETERMINATION OF QUANTITIES AND ARE ACCURATE TO WITHIN $\pm 0.05\text{m}$.

3. ALL WORKS TO BE CARRIED OUT IN ACCORDANCE WITH YOURLAND UMBRELLA AGREEMENT GENERAL CONDITIONS OF CONTRACT, THE ROAD & DRAINAGE SPECIFICATION, APPROVED MUNICIPALITY SPECIFICATIONS AND STANDARD DRAWINGS AND TO THE SATISFACTION OF THE SUPERINTENDENT AND THE MUNICIPAL ENGINEER OR THEIR REPRESENTATIVE.

4. ROAD CHAINAGES REFER TO ROAD CENTRELINES. CHAINAGES FOR INTERSECTIONS AND CUL-DE-SACS REFER TO THE LIP OF KERB

EARTHWORKS

5. THE LOCATION OF EXISTING SERVICES SHOULD BE DETERMINED BY THE CONTRACTOR PRIOR TO COMMENCING ANY EXCAVATION BY CONTACTING ALL LOCAL SERVICE AUTHORITIES. ANY EXISTING SERVICES SHOWN ON THESE DRAWINGS ARE OFFERED AS A GUIDE ONLY AND ARE NOT GUARANTEED AS CORRECT.

6. WHERE REQUIRED ANY BUILDINGS, TROUGHS, FENCES AND OTHER STRUCTURES ON SITE ARE TO BE REMOVED AS DIRECTED BY THE ENGINEER. THE COST OF REMOVAL IS TO BE INCLUDED IN THE OVERALL EARTHWORKS FIGURE UNLESS A SPECIFIC ITEM FOR REMOVAL IS DENOTED IN THE SCHEDULE.

7. ALL EXCAVATED ROCK AND SURPLUS SPOIL TO BE REMOVED AND DISPOSED OFF SITE UNLESS NOTED OTHERWISE.

8. ALL FILLING ON LOTS AND WITHIN ROAD RESERVES GREATER THAN 200mm IS TO BE UNDERTAKEN USING LEVEL 1 SUPERVISION AND BE COMPLETED IN ACCORDANCE WITH AS 3798-2007. FILL AREAS ARE TO BE STRIPPED OF TOPSOIL, FILLED AND REPLACED WITH TOPSOIL (WHERE REQUIRED) TO OBTAIN THE FINAL LEVELS SHOWN ON THE DRAWINGS.

9. FILLING MATERIAL IS TO BE IN ACCORDANCE WITH THE SPECIFICATION, AS 3798-2007 & TO THE SATISFACTION OF COUNCIL AND THE SUPERINTENDENT.

10. ALL BATTERS SHALL BE 1 IN 6, UNLESS OTHERWISE SHOWN.

11. NO FILL OR STOCKPILING OF MATERIAL IS TO BE PLACED ON ANY RESERVE FOR PUBLIC OPEN SPACE UNLESS OTHERWISE DIRECTED OR APPROVED BY THE SUPERINTENDENT.

12. TBM'S TO BE RE-ESTABLISHED BY THE LICENSED SURVEYOR IF FOUND TO BE MISSING AT THE COMMENCEMENT OF CONSTRUCTION. THE CONTRACTOR WILL BE RESPONSIBLE FOR CARE AND MAINTENANCE OF T.B.M.'S THEREAFTER.

13. AT LEAST 3 DAYS PRIOR TO COMMENCING WORK ON EXCAVATIONS IN EXCESS OF 1.50m DEEP, A NOTIFICATION FORM MUST BE SENT TO WORKSAFE. THE CONTRACTOR IS TO COMPLY WITH WORKSAFE, THE MINES (TRENCHES) REGULATION 1982, THE MINES ACT 1958 AND OCCUPATIONAL HEALTH AND SAFETY ACT 1985, 2004.

14. ALL SERVICE TRENCHES UNDER DRIVEWAYS, FOOTPATHS AND PARKING BAYS TO BE BACKFILLED WITH CLASS 2 CRUSHED ROCK. SERVICE TRENCHES LESS THAN 750mm BEHIND KERB AND CHANNEL OR PAVED TRAFFIC AREAS ARE ALSO TO BE BACKFILLED WITH COMPACTED CLASS 2 CRUSHED ROCK.

15. WHERE REQUIRED, ALL EXISTING DAMS, DEPRESSIONS AND DRAINS ARE TO BE BREACHED, DRAINED, DESLUGGED AND SHALL BE EXCAVATED TO A CLEAN FIRM BASE. THE SURFACE SHALL BE INSPECTED, APPROVED AND LEVELED BY THE ENGINEER PRIOR TO COMMENCEMENT OF FILLING. ALL FILLING WITHIN ROAD RESERVES TO BE UNDERTAKEN USING LEVEL 1 SUPERVISION AND TO BE COMPLETED IN ACCORDANCE WITH AS 3798-2007 AND TO THE SATISFACTION OF COUNCIL AND THE SUPERINTENDENT.

16. NO BLASTING TO BE CARRIED OUT WITHIN THE MUNICIPALITY WITHOUT OBTAINING COUNCIL'S PERMISSION.

SERVICES

17. GAS AND WATER CONDUITS ARE TO BE, 950mm CLASS 12 P.V.C. - SINGLE SERVICE 8100mm CLASS 12 P.V.C. - DUAL SERVICE (DRINKING AND NON DRINKING WATER)

WITH THE FOLLOWING MINIMUM COVER TO FINISHED SURFACE LEVELS:
ROAD PAVEMENT - 0.80m
VERGE, FOOTPATHS - 0.45m

18. ALL SERVICE CONDUIT TRENCHES UNDER ROAD PAVEMENTS TO BE BACKFILLED IN ACCORDANCE WITH RELEVANT MUNICIPALITY OR ROAD AUTHORITY SPECIFICATION.

19. WATER TAPPINGS TO BE LOCATED IN ACCORDANCE WITH MRWA-W-110 STANDARDS UNLESS OTHERWISE SHOW

20. TELSTRA ARE TO BE NOTIFIED 7 DAYS PRIOR TO PLACEMENT OF CONCRETE WORKS. IIF

SERVICE INDICATED)

STORM WATER DRAINAGE

21. AG/SUBSOIL DRAIN TO BE LAID BEHIND KERB WHERE REQUIRED IN ACCORDANCE WITH THE COUNCIL STANDARD DRAWINGS AND CONNECTED TO UNDERGROUND DRAINAGE.

22. ALL STORMWATER DRAINS ARE TO BE CLASS '2' R.C./ P.P PLASTIC PIPES UNLESS OTHERWISE SHOWN. ALL R.C./ P.P JOINTS ARE TO BE RUBBER RING JOINTED (R.R.J.).

23. CENTRELINES OF ALL EASEMENT DRAINS ARE OFFSET 2.5m OR 3.0m (WHERE OUTSIDE OF SEWER) FROM THE PROPERTY LINE UNLESS SHOWN OTHERWISE.

24. WHERE CURVED PIPES ARE SHOWN ON THE FACE PLANS THEY ARE TO BE LAID PARALLEL TO THE BACK OF KERB, EXCEPT WHERE A RADIUS HAS BEEN SPECIFICALLY NOMINATED. CURVED PIPES ARE TO BE APPROVED BY COUNCIL AND IN ACCORDANCE WITH THE MANUFACTURERS SPECIFICATIONS.

PAVEMENT

25. PAVEMENT DEPTHS MAY BE MODIFIED AS DIRECTED BY THE SUPERINTENDENT. PAVEMENT TO BE BOXED OUT TO MINIMUM DEPTH DENOTED, INSPECTED AND IF SUBGRADE IS IN QUESTION, FURTHER TESTING CARRIED OUT TO DETERMINE FINAL PAVEMENT DEPTH.

WHERE PAVEMENT IS CONSTRUCTED ON FILLING, FILL MATERIAL IS TO BE APPROVED BY THE SUPERINTENDENT AND COUNCIL. ALL FILLING WITHIN ROAD RESERVES TO BE UNDERTAKEN USING LEVEL 1 SUPERVISION AND TO BE COMPLETED IN ACCORDANCE WITH AS 3798-2007 AND TO THE SATISFACTION OF COUNCIL AND THE SUPERINTENDENT.

26. WHEN PAVEMENT EXCAVATION IS IN ROCK ALL LOOSE MATERIAL (INCLUDING ROCKS AND CLAY) MUST BE REMOVED. THE SUB-GRADE MUST THEN BE REGULATED WITH COUNCIL APPROVED MATERIAL.

SIGNAGE AND LINEMARKING

27. LINEMARKING AND SIGNAGE TO BE INSTALLED IN ACCORDANCE WITH AS 1742 SERIES UNLESS NOTED OTHERWISE. STREET SIGNS ARE TO BE INSTALLED IN ACCORDANCE WITH COUNCIL STANDARDS.

28. ALL TEMPORARY WARNING SIGNS USED DURING CONSTRUCTION SHALL BE SUPPLIED AND MAINTAINED IN ACCORDANCE WITH AS 1742-3.

29. TACTILE GROUND SURFACE INDICATORS ARE TO BE INSTALLED IN ACCORDANCE WITH THE DISABILITY DISCRIMINATION ACT AND RELEVANT COUNCIL STANDARD DRAWINGS.

ENVIRONMENTAL

30. CONTRACTOR TO PROVIDE AN ENVIRONMENTAL MANAGEMENT PLAN INCLUDING SILT AND SEDIMENT RUNOFF PROTECTION ETC. PRIOR TO THE COMMENCEMENT OF WORKS.

31. ALL TREES AND SHRUBS ARE TO BE RETAINED UNLESS OTHERWISE SHOWN. IF ROAD AND DRAINAGE CONSTRUCTION NECESSITATES THEIR REMOVAL, WRITTEN PERMISSION MUST BE OBTAINED FROM THE SUPERINTENDENT.

32. TREES NOT SPECIFIED FOR REMOVAL ARE TO BE PROTECTED WITH APPROPRIATE EXCLUSION FENCING PRIOR TO COMMENCEMENT OF ANY WORKS.

DRAWING SCHEDULE

DRAWING	DESCRIPTION	SHEET No.	REVISION
CR100	GENERAL NOTES - SHEET 1	1	4
CR200	ROAD LAYOUT PLANS - SHEET 1	2	4
CR201	ROAD LAYOUT PLANS - SHEET 2	3	1
CR202	ROAD LAYOUT PLANS - SHEET 3	4	1
CR203	ROAD LAYOUT PLANS - SHEET 4	5	2
CR204	ROAD LAYOUT PLANS - SHEET 5	6	1
CR300	ROAD LONG SECTIONS - SHEET 1	7	1
CR301	ROAD LONG SECTIONS - SHEET 2	8	1
CR400	ROAD CROSS SECTIONS - SHEET 1	9	1
CR401	ROAD CROSS SECTIONS - SHEET 2	10	1
CR600	DRAINAGE LONG SECTIONS - SHEET 1	11	1
CR601	DRAINAGE LONG SECTIONS - SHEET 2	12	1
CR700	PAVEMENT AND TYPICAL DETAILS - SHEET 1	13	1
CR800	SIGNAGE AND LINEMARKING - SHEET 1	14	1

SERVICE LOCATION TABLE

ROAD NAME	POTABLE WATER		GAS		OPTIC FIBRE (OF)		ELECTRICITY			
	SIDE	OFFSET	SIDE	OFFSET	SIDE	OFFSET	POLE		U/G CABLE	
SEABERRY PROMENADE	N	2.85	N	2.35	S	2.10	-	-	S	2.70
TASHINNY ROAD	N	2.85	N	2.35	S	2.10	-	-	S	2.65
HEYMOUNT WAY	N	2.85	N	2.35	S	2.10	-	-	S	2.65

- TELECOMMUNICATIONS AND ELECTRICITY CABLES TO BE CONSTRUCTED IN A COMMON TRENCH IN ACCORDANCE WITH ELECTRICITY AUTHORITY STANDARD DRG'S.
- GAS AND WATER MAINS TO BE CONSTRUCTED IN A COMMON TRENCH.
- x = OFFSET FROM BACK OF KERB



WARNING

BEWARE OF UNDERGROUND/OVERHEAD SERVICES
THE LOCATION OF SERVICES ARE APPROXIMATE ONLY. AND THEIR EXACT POSITION SHOULD BE PROVEN ON SITE. NO GUARANTEE IS GIVEN THAT ALL EXISTING SERVICES ARE SHOWN. SPECIAL CONSIDERATION SHOULD BE GIVEN TO CONSTRUCTION PROCEDURES UNDER OVERHEAD ELECTRICITY TRANSMISSION LINES.



LEGEND

DESCRIPTION

WATER MAIN, VALVE AND HYDRANT
UNDERGROUND ELECTRICITY
OVERHEAD ELECTRICITY & POLE
TELECOMMUNICATIONS & SERVICE PIT
OPTIC FIBRE
OVERHEAD TELECOMMUNICATIONS
GAS MAIN
BRANCH SEWER & MAINTENANCE STRUCTURE
SEWER & MAINTENANCE STRUCTURE
SEWER RISING MAIN
CENTRAL INVERT
COUNCIL STORMWATER DRAIN AND PIT
STORM WATER DRAINAGE PROPERTY INLETS
COUNCIL STORM WATER PITS
HOUSE DRAIN
AG DRAIN AND FLUSHER
MWC STORM WATER DRAIN & PIT
MWC STORM WATER PITS
STORM WATER DRAINAGE PIT NUMBER
GAS & WATER CONDUITS
CONCRETE VEHICLE CROSSING
SURFACE CONTOUR MINOR
SURFACE CONTOUR MAJOR
SURFACE LEVEL
BATTER LEVEL (TOP / TOE)
RETAINING WALL LEVEL (TOP/BOTTOM)
EARTHWORKS GRADE
SIGN AND POST
LIGHT & POLE (BY OTHERS)
STREET SIGN
PERMANENT SURVEY MARK
TEMPORARY BENCH MARK
BOLLARD
ROAD CHAINAGES
LOT CHAINAGES
LIMIT OF WORKS
BATTER
EXCAVATION GREATER THAN 0.20m
FILLING GREATER THAN 0.20m
ROCK BEACHING
PUBLIC LIGHTING
FENCE - TREE PROTECTION
FENCE - VEHICLE EXCLUSION
FENCES
GUARD RAIL
TREE (& SURVEYED CANOPY) TO BE RETAINED
TREE TO BE PROTECTED
TREE TO BE REMOVED
VEGETATION LINE
FOOTPATH
TACTILE GROUND SURFACE INDICATOR

EXISTING

DW
E
OE
T
OF
G
S
SRM
>
H
AG
Gw
Gw
-169.00-
-168.90-
E123.45
T124.80
TW112.76
CH116.57 (L/R)TP
CH116.57
CH20.06

PROPOSED

DW
E
OE
T
OF
G
S
SRM
>
H
AG
Gw
Gw
169.00
168.90
F124.68
T124.80
TW128.50 BW126.74
1 in 150
CH116.57 (L/R)TP
CH116.57
CH20.06

FUTURE

DW
E
OE
T
OF
G
S
SRM
>
H
AG
Gw
Gw
FUT SWD
CH116.57 (L/R)TP
CH116.57
CH20.06

file name: 320977-03BCR100.dwg, layout name: CR100, plotted by: N.R.Matthew, file location: C:\Users\N.R.Matthew\Documents\320977-03BCR_454\DWG\CR100.dwg, date: 04/03/2025 10:57 AM, sheet: 1 of 14, sheet's

Rev	Amendments	Approved	Date
4	UPDATED DRAWING SCHEDULE	B.W	04-02-25
3	AS CONSTRUCTED	B.W	04-02-25
1	ISSUED FOR CONSTRUCTION	N.G	26-06-24
0	ISSUED FOR CONSTRUCTION	N.G	05-01-24
C	COUNCIL COMMENTS	N.G	05-01-24
B	COUNCIL COMMENTS	N.G	05-01-24
A	PRELIMINARY ISSUE	N.G	24-03-24

Scale



© Spiire Australia Pty Ltd All Rights Reserved
This document is produced by Spiire Australia Pty Ltd solely for the benefit of and use by the client in accordance with the terms of the retainer. Spiire Australia Pty Ltd does not and shall not assume any responsibility or liability whatsoever to any third party arising out of any use or reliance by third party on the content of this document.

spiire

1/126 Albert Road Warragul
Victoria 3820 Australia T 61 3 5644 5000
spiire.com.au ABN 55 050 029 635

YourLand
Developments

Designed
N.R.MATHEW

Authorised
N.GREEN

Checked
N.WORME

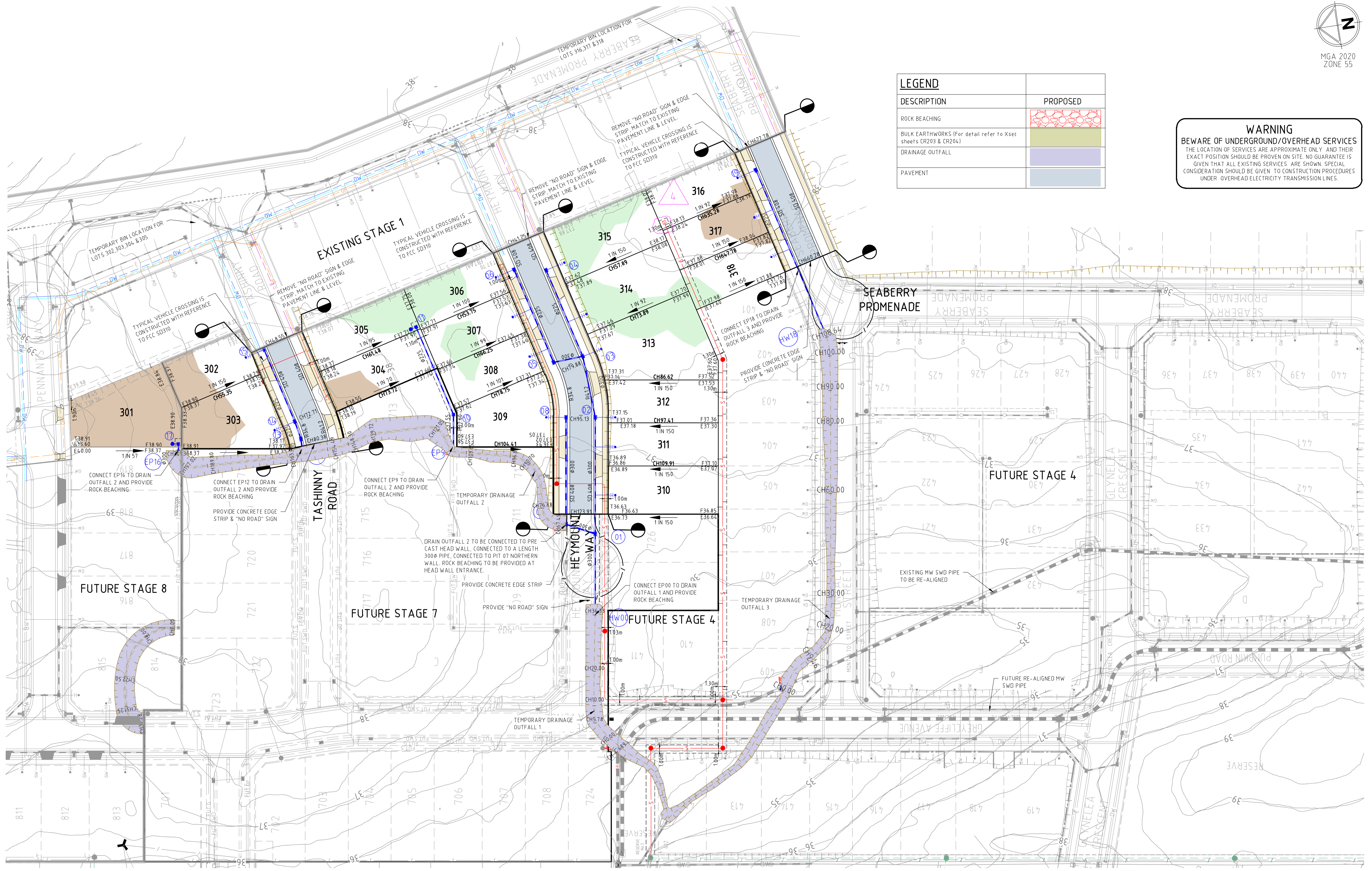
Date
JUNE 24

**250 WEDGE ROAD
STAGE 3
ROAD AND DRAINAGE
GENERAL NOTES**
FRANKSTON CITY COUNCIL
YOURLAND DEVELOPMENTS PTY LTD

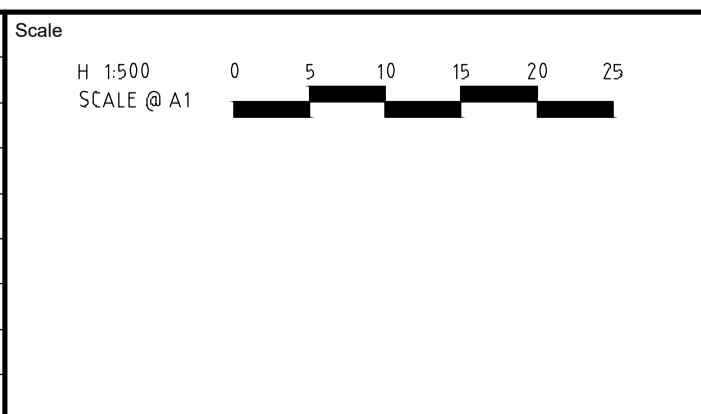
AS CONSTRUCTED Drg No **320977-03BCR100** Rev **4**

LEGEND	
DESCRIPTION	PROPOSED
ROCK BEACHING	
BULK EARTHWORKS (For detail refer to Xset sheets CR203 & CR204)	
DRAINAGE OUTFALL	
PAVEMENT	

WARNING
BEWARE OF UNDERGROUND/OVERHEAD SERVICES
THE LOCATION OF SERVICES ARE APPROXIMATE ONLY. AND THEIR EXACT POSITION SHOULD BE PROVEN ON SITE. NO GUARANTEE IS GIVEN THAT ALL EXISTING SERVICES ARE SHOWN. SPECIAL CONSIDERATION SHOULD BE GIVEN TO CONSTRUCTION PROCEDURES UNDER OVERHEAD ELECTRICITY TRANSMISSION LINES.



Rev	Amendments	Approved	Date
4	EASEMENT REVISED FOR LOT 316	B.W	04-03-25
3	AS CONSTRUCTED	B.W	04-02-25
2	UPDATED DRIVEWAY FOR LOT 301	B.W	22-10-24
1	ISSUED FOR CONSTRUCTION	N.G	26-06-24
0	ISSUED FOR CONSTRUCTION	N.G	05-01-24
C	COUNCIL COMMENTS	N.G	05-01-24
B	COUNCIL COMMENTS	N.G	05-01-24
A	PRELIMINARY ISSUE	N.G	24-03-24



ISO 9001
ISO 45001
ISO 14001

System Certified

© Spiire Australia Pty Ltd All Rights Reserved
This document is produced by Spiire Australia Pty Ltd solely for the benefit of and use by the client in accordance with the terms of the retainer. Spiire Australia Pty Ltd does not and shall not assume any responsibility or liability whatsoever to any third party arising out of any use or reliance by third party on the content of this document.

spiire

1/126 Albert Road Warragul
Victoria 3820 Australia T 61 3 5644 5000
spiire.com.au ABN 55 050 029 635

YourLand
Developments

Designed
N.R.MATHEW

Authorised
N.GREEN

Checked
N.WORME

Date
FEBRUARY 25

**250 WEDGE ROAD
STAGE 3
ROAD AND DRAINAGE
FACE PLAN**
FRNKSTON CITY COUNCIL
YOURLAND DEVELOPMENTS PTY LTD

AS CONSTRUCTED

Drg No
320977-03BCR200

Rev
4